



# WINTER CANOLA PROGRAM

2024/25



## BENEFITING AGRICULTURE, ENERGY AND THE ENVIRONMENT

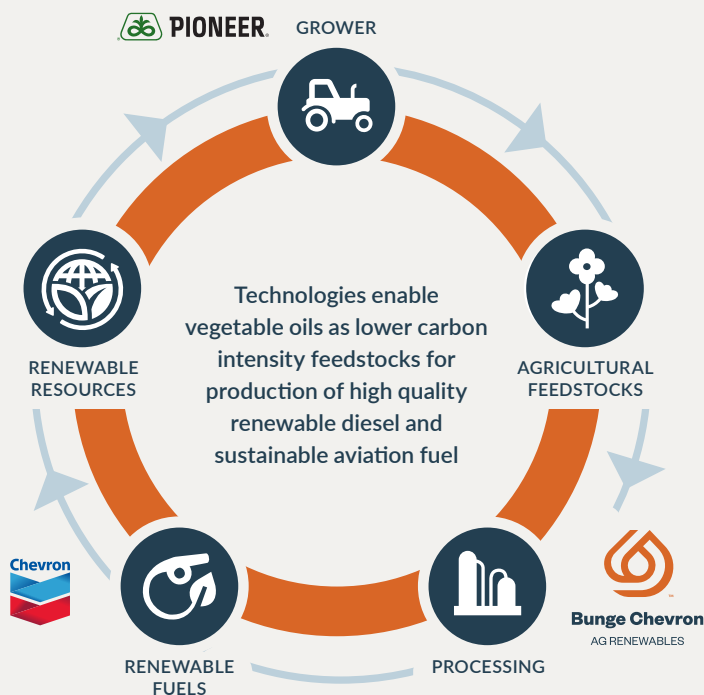
Winter canola is uniquely positioned to be included into current cropping systems, improving farm income potential while creating an opportunity to reduce fossil fuels and carbon emissions.

# SUPPORTING A LOW-CARBON ENERGY FUTURE

As the world prioritizes reducing carbon emissions and transitions to lower carbon energy sources, the demand for renewable biofuels derived from agricultural crops is steadily increasing. Bunge, Chevron and Corteva Agriscience™ are joining forces to unlock innovation across the value chain by introducing proprietary winter canola and building the infrastructure to create a new revenue opportunity for growers with a sustainable rotational cash crop.

## WINTER CANOLA – A GROWING OPPORTUNITY

There are a number of benefits that make growing winter canola hybrids a wise choice, from its high yield potential to enhanced reliability across farming environments to better manage financial risks. It can be used as a feedstock to produce renewable diesel, biodiesel, sustainable aviation fuel and replacements for petroleum-based chemicals. Because of unique genetics and recommended agronomic practices, this crop has the potential to achieve lower carbon intensity levels while bringing opportunities to adopt sustainable practices.



### WHAT'S IN IT FOR THE GROWERS?

- Increase total farm profitability
- Participate in growing renewables feedstock market
- Improve soil through plant diversity and water filtration
- Maximize productivity through multi-year crop rotation
- Access to federal crop insurance for qualified participants



### HOW TO JOIN THE PROGRAM

- 1 Contact your local Bunge representative to sign-up a specific number of acres. Pioneer provides agronomic guidance and stewardship support through local area experts.
- 2 Contract acres of production at a fixed price based on the July 2025 Canola Futures, +/- local area basis. 'Act of God' clause included and additional pricing alternatives are available.
- 3 Deliver any and all crop production to a nearby river loading facility and get paid by Bunge Chevron Ag Renewables. Grain delivered subject to quality grading standards.





Pioneer® brand canola delivers leading products proven to help maximize yield potential.

#### LEADING DISEASE RESISTANCE

We combine industry leading research with top genetics to help improve productivity with unmatched disease resistance.

#### TOP PERFORMANCE

With elite genetics, our canola hybrids deliver industry-leading yield potential and consistent oil content.

### PRODUCTION GUIDELINES

Planting Dates	Sept. 10 – Oct. 1 on well drained soils
Seedbed Prep	Firm seedbed required
Seeding Rate	2.5 - 3 lbs/ac (depending on seed size) to achieve final stand of 5 – 7 plants per sq/ft in late fall
Row Spacing	7.5" – 15"
Seeding Depth	1/4" – 1/2"
Weed Control	Pre-emergence herbicide application is important. Clean seedbed is vital for stand establishment and weed control. Avoid fields with Italian ryegrass or wild mustard/radish.
Fertility	Fall (per acre): Nitrogen 25 lbs, P=80 lbs, K=120 lbs, Sulfur=25 lbs, Boron=2 lbs. Adjust per soil test. Spring (per acre): Applied prior to stem extension – Nitrogen 100 lbs (split applied around 30 days apart to maximize yield), 1st application to include Sulfur=25 lbs, Boron=2 lbs.
Insect Management	Treat per scouting thresholds for aphids and/or cabbage pod weevils.
Fungal Disease Management	Fungicide is highly recommended at early bloom for Sclerotinia and other diseases. Application timing 30-50% bloom.
Harvest	Late May – Early June, use of a desiccant to ensure even moisture/maturity for ease of harvest.

#### Protection with Lumiderm® Insecticide Seed Treatment

With Lumiderm® treated canola seed, get the full advantage for the highest yield potential. This enhanced protection is critical during the first few weeks of seedling growth, allowing the canola crop to thrive. Lumiderm has also led to substantial increases in plant vigor and biomass.

A global quest for lower carbon intensity fuel alternatives from renewable sources.

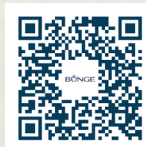


We appreciate your support and partnership in developing this long-term program focused on more sustainable solutions for consumers around the world and for helping drive change at scale.

## JOIN US IN THIS PROGRAM!

Take the necessary steps to bring even more innovation to your farm operation.

Interested in learning more? Scan the QR code below!



## CONNECT WITH US

### GRAIN MARKETING

**Alex Hibler**  
Bunge, Commercial Manager  
alex.hibler@bunge.com  
Cell: 270-214-1667

### AGRONOMIC SUPPORT AND ADVICE

**Kyle Holmberg**  
Pioneer, Field Agronomist  
kyle.holmberg@corteva.com  
Cell: 317-671-1719



#### About Bunge Chevron Ag Renewables

Through a 50/50 joint venture, Bunge (NYSE: BG), a leading agriculture, food and ingredients company, and Chevron (NYSE: CVX), one of the world's leading integrated energy companies, are helping scale up a reliable supply chain from farmer to fueling station, as well as finding opportunities to increase their market participation in the development of next generation, renewable fuels and advance a lower carbon energy future.

#### About Corteva Agriscience

Corteva, Inc. (NYSE: CTVA) is a publicly traded, global pure-play agriculture company that combines industry-leading innovation, high-touch customer engagement and operational execution to profitably deliver solutions for the world's most pressing agriculture challenges. Corteva generates advantaged market preference through its unique distribution strategy, together with its balanced and globally diverse mix of seed, crop protection, and digital products and services. With some of the most recognized brands in agriculture and a technology pipeline well positioned to drive growth, the company is committed to maximizing productivity for farmers, while working with stakeholders throughout the food system as it fulfills its promise to enrich the lives of those who produce and those who consume, ensuring progress for generations to come. More information can be found at [www.corteva.com](http://www.corteva.com). Follow Corteva on Facebook, Instagram, LinkedIn, Twitter, and YouTube.